

# BASF NEOPOR® GPS FOR SIPs

The Next Generation of Insulation

[neopor.basf.us](http://neopor.basf.us)

 **BASF**  
We create chemistry

 **Neopor®**



# WHAT IS BASF NEOPOR® GPS

Neopor GPS is a remarkable graphite polystyrene (GPS) rigid foam insulation that offers construction projects unparalleled efficiency, cost-effectiveness, and sustainability. It stands out from other insulation solutions by actually increasing its R-value as the outside temperature drops.



## Why Choose Neopor For Your SIPs Core?

### The Next Generation of Insulation

- Lower carbon footprint due to less materials used during manufacturing
- Energy savings: nearly 20% greater R-Value than panels made from standard EPS SIPs
- Neopor® maintains its R-value over time
- Ideal for Passive House construction standards

### More Design Flexibility

- 25% thinner SIPs provides options for slimmer wall profiles or increased R-value.
- Composition adds strength and durability to a structure
- Can be used various architectural styles & in multiple places in the building

To learn more about SIPs, visit [SIPs.org](http://SIPs.org)



### Neopor® SIPs In Action

High Performance SIP Walls & Roof, Tofte, MN



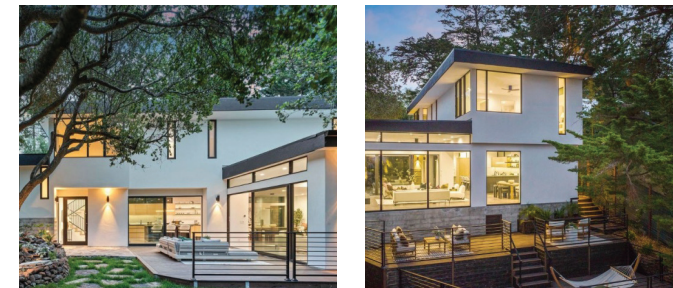
## Ensure You Have Neopor at the Core

- Ask your SIPs manufacturer.
- If they give you the wrong answer, or you need help finding a SIPs manufacturer, scan the QR code to contact us.



# THE CASE FOR NEOPOR

Be Inspired by These Real-World Case Studies



### Energy Star SIP House | Berkeley, CA

By utilizing SIPs, Architects Denise Hall Montgomery Architecture created a very contemporary modern design to the structure taking full advantage of the outstanding view of the Bay Area. And thanks in-part to BASF Neopor SIP panels, the builder saved nearly 35% in overall construction cost by using floor, wall and roof SIPs to construct the home. The builder was also able to achieve higher energy rating and exceed Cal Green Requirements.

Manufacturer: Premier Building Systems | Builder: Shell Building Systems | Design Professional: Denise Hall Montgomery Architecture

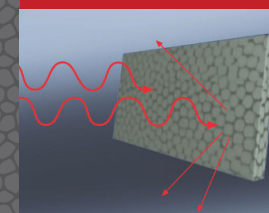


### Energy Star SIP Getaway Cabin Grand Marais, MN

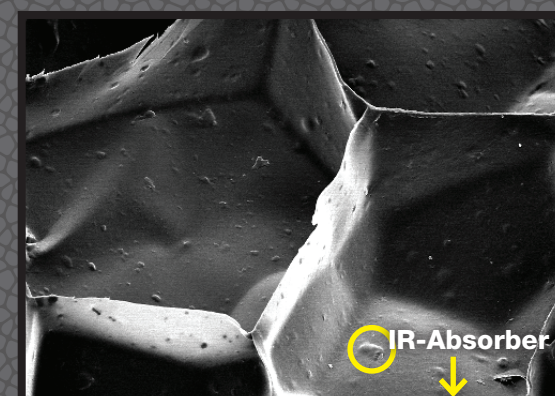
Taiga Design+Build overlaid BASF Neopor R-40 supported SIPs to the existing a-frame structure of this beautiful water-front cabin and retain the historic wood from the original build. This update increased the insulative value of the roof by 6x.

Manufacturer: Energy Panel Structures | Builder & Design Professional: Taiga Design+Build

## Neopor For Your SIPs Core — Engineered Insulation Basics —



**It's the graphite.** Graphite's unique properties prevent the heat dissipation caused by radiation.



$$R\text{-value} = \text{Neopor GPS Matrix} + \text{air} + \text{Radiation}$$

**BASF Climate Goal:**  
Net zero CO<sub>2</sub> emissions by 2050







# THIRD PARTY VALIDATION, CERTIFICATIONS, AND DECLARATIONS



GREENGUARD  
Gold Certification



Fire & code approved by UL & ICC for  
ASTM E84, NFPA 286 and NFPA 2885



Need more information?  
Visit our website.



ASTM C578 Type I,  
VII, II, II (1.45 lbs/ft<sup>3</sup>)



Can help earn LEED points

[neopor.basf.us](http://neopor.basf.us)

**BASF**  
We create chemistry

**Neopor**<sup>®</sup>